



**Government of India
Ministry of Earth Sciences
India Meteorological Department**



**Press Release
Date: 14th September, 2025
Time of Issue: 1315 hours IST**

**Subject: i) Southwest monsoon has withdrawn from some parts of Rajasthan today, 14th September 2025. Conditions are favourable for withdrawal of Southwest Monsoon from some more parts of Rajasthan and some parts of Punjab and Gujarat during next 2-3 days.
ii) Heavy to Very heavy rainfall over northeastern states and Maharashtra for next 3 days.**

Realised weather during past 24 hours till 0830 hours IST of today, the 14th September, 2025:

- ❖ **Heavy to very heavy rainfall with Extremely heavy rainfall (≥ 21 cm)** has been recorded at isolated places over Bihar, Sub-Himalayan West Bengal & Sikkim, Himachal Pradesh.
- ❖ **Very heavy rainfall (12-20 cm)** has been recorded at isolated places over Telangana, Konkan & Goa, Assam & Meghalaya, Nagaland, Manipur, Mizoram & Tripura, Marathawada.
- ❖ **Heavy rainfall (7-11 cm)** has been recorded at isolated places over Tamil Nadu, Coastal Andhra Pradesh & Yanam, Gangetic West Bengal, Gujarat Region, Uttarakhand, East Madhya Pradesh, Madhya Maharashtra.

For more details of realised weather, kindly refer [Annexure I](#).

i. Weather Systems, Forecast and Warnings (refer to [Annexure II & III](#)):

- ❖ Southwest monsoon has withdrawn from some parts of Rajasthan today, 14th September 2025. Conditions are favourable for withdrawal of Southwest Monsoon from some more parts of Rajasthan and some parts of Punjab and Gujarat during next 2-3 days.
- ❖ The Low Pressure area over north Telangana & adjoining Vidarbha persist at 0830 hrs IST of today, the 14th September, 2025. The associated cyclonic circulation now extends up to 4.5 km above mean sea level tilting southwestwards with height. It is likely to move west-northwestwards towards central parts of Vidarbha & neighbourhood. Thereafter, it is likely to move nearly northwards as a remanent upper air cyclonic circulation.
- ❖ A trough runs from cyclonic circulation associated with low pressure area over north Telangana & adjoining Vidarbha to south Maharashtra coast across North Interior Karnataka in lower & middle tropospheric level.
- ❖ A upper air cyclonic circulation over northeast Bangladesh in lower & middle tropospheric level.
- ❖ A upper air cyclonic circulation over central Assam in lower tropospheric level.
- ❖ A trough in in lower westerlies roughly along at Long. 84°E to the north of Lat. 23°N.
- ❖ An upper air cyclonic circulation lies over southeast Bay of Bengal in lower & middle tropospheric level.
- ❖ A cyclonic circulation over northwest Arabian Sea now lies over westcentral Arabian sea & northwest Arabian Sea in lower & middle tropospheric level.

Under the influence of these systems, the following weather is likely:

Northeast India:

- ❖ Light/moderate rain/thunderstorm at most/many places with isolated **heavy rainfall** likely over Arunachal Pradesh on 14th & 17th; Assam & Meghalaya, Nagaland, Manipur, Mizoram & Tripura on 15th & 16th & during 18th -20th September with **very heavy falls over Arunachal Pradesh on 15th & 16th; Nagaland, Manipur, Mizoram & Tripura and Assam & Meghalaya on 14th September.**

South Peninsular India:

- ❖ Light to moderate rain/thunderstorm & gusty winds (speed 30-40 kmph) at many/some places with isolated **heavy rainfall** likely over Tamil Nadu during 16th-19th; Coastal Andhra Pradesh & Yanam on 14th; Telangana during 14th & 15th; North Interior Karnataka during 14th-16th September.
- ❖ Strong surface winds (speed reaching 30-50 kmph) very likely over Coastal Andhra Pradesh & Yanam and Rayalaseema during next 5 days.

East & Central India:

- ❖ Light to moderate rain/thunderstorm at most/many places with isolated **heavy rainfall** likely over West Madhya Pradesh, Vidarbha during 14th-16th; East Madhya Pradesh, Chhattisgarh on 14th & 15th; Andaman & Nicobar Islands on 14th & during 17th- 19th; Sub-Himalayan West Bengal & Sikkim, Jharkhand during 16th-18th; Bihar on 17th & 18th; Odisha, Gangetic West Bengal on 14th September with isolated **very heavy falls over Sub-Himalayan West Bengal & Sikkim on 14th & 15th and Bihar during 14th-16th September.**

West India:

- ❖ Light to moderate rain/thunderstorm at many/some places with **isolated heavy rainfall** likely over Konkan & Goa, Madhya Maharashtra & Marathawada on 16th September with **very heavy falls over Konkan & Goa Madhya, Maharashtra & Marathawada 14th & 15th September.**

Northwest India:

- ❖ Light to moderate rain/thunderstorm at some/isolated places with **isolated heavy rainfall** likely over Himachal Pradesh on 14th; Uttarakhand on 14th & 16th; East Uttar Pradesh during 14th-20th September with **very heavy falls over Uttarakhand on 15th September.**

Fishermen warning:

Fishermen are advised not to venture into the following areas as per Fishermen Warning Graphics:

Arabian Sea (AS):

- Westcentral & adjoining southwest AS, along and off Somalia coast during 14th to 19th September, along and off Oman-Yemen coasts during 16th -18th September, along and off Oman coast on 14th & 18th September.
- Northwest & adjoining Westcentral AS and adjoining sea area on 16th September.
- Eastcentral AS and along and off Konkan & Goa coast on 15th September.

Bay of Bengal (BoB):

- Gulf of Mannar & adjoining Comorin area, over few parts of southwest Bay of Bengal and adjoining sea areas, along and off Sri Lanka coast during 14th -19th September.

ii. Weather conditions and forecast over Delhi/NCR during 14th September to 17th September 2025 (Annexure IV)

For more details, kindly refer National Weather Bulletin:

https://mausam.imd.gov.in/responsive/all_india_forecast_bulletin.php

For District wise warnings refer: <https://mausam.imd.gov.in/responsive/districtWiseWarningGIS.php>

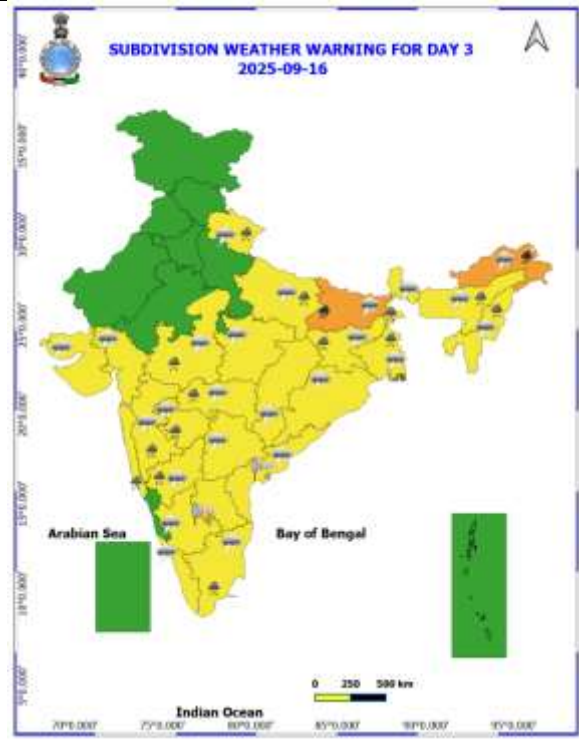
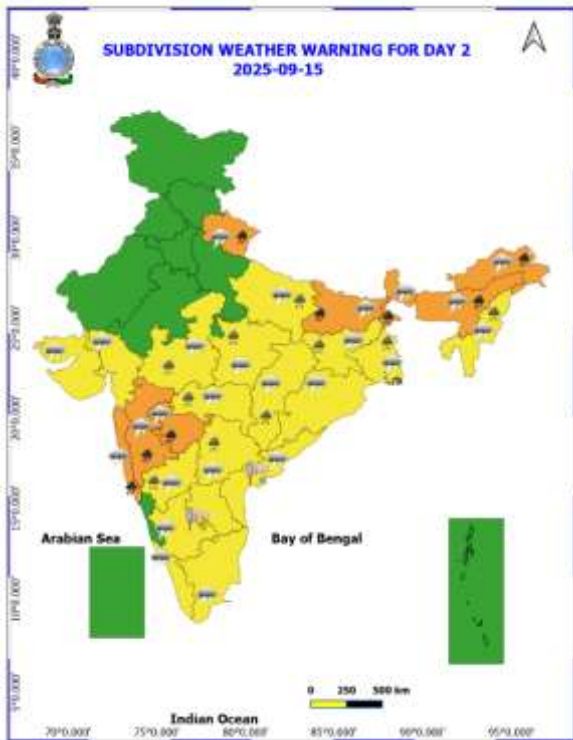
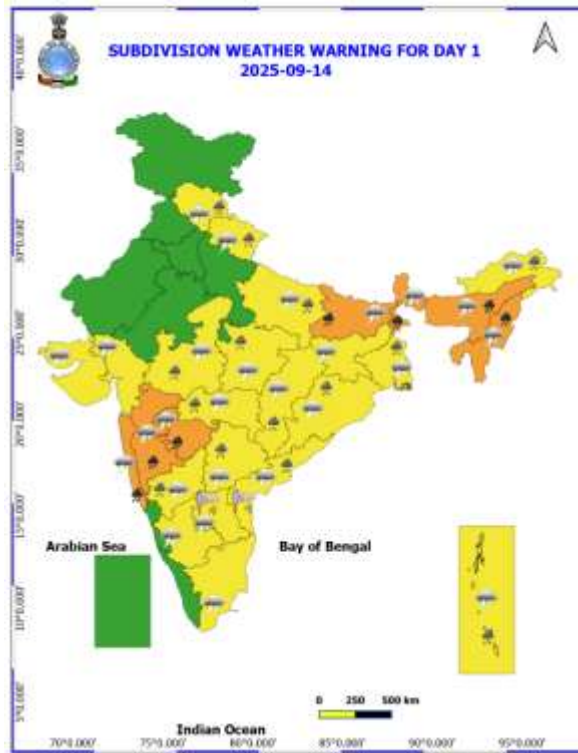
For Fishermen warning refer <https://rsmcnewdelhi.imd.gov.in/fishermen-warning.php>

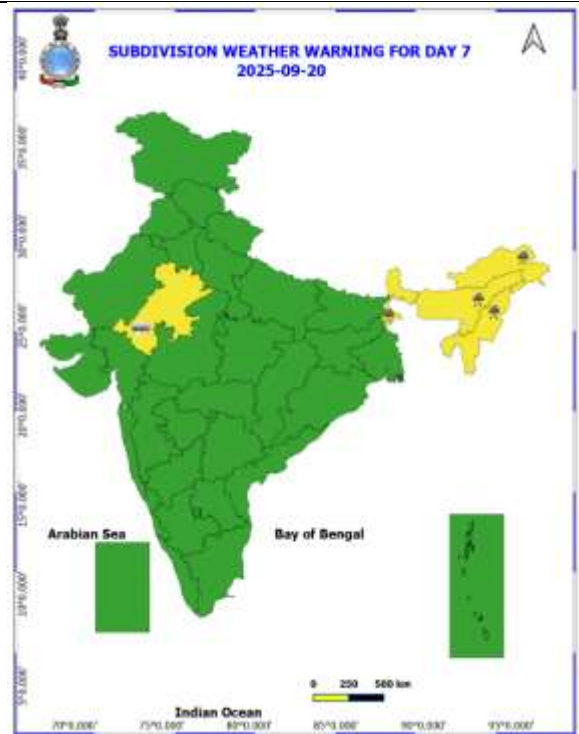
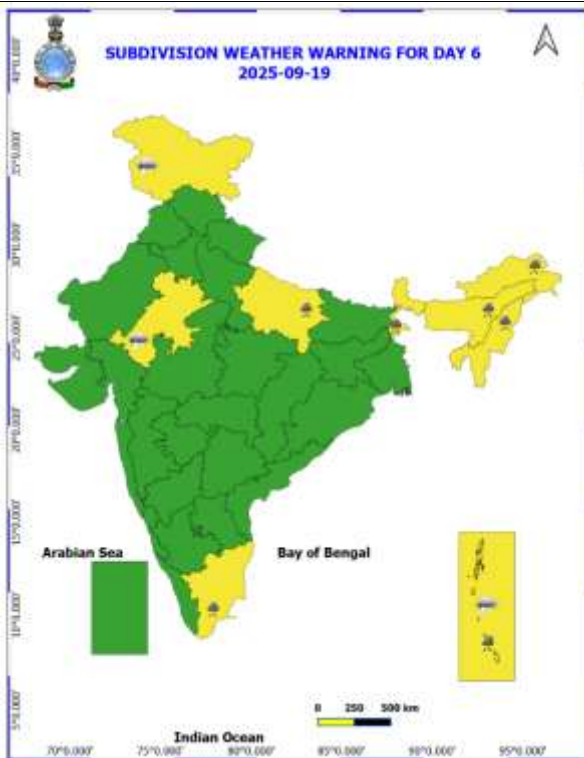
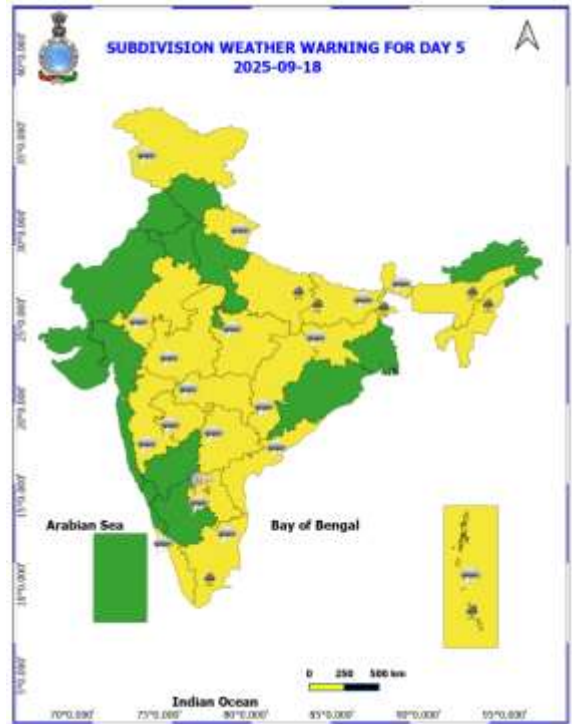
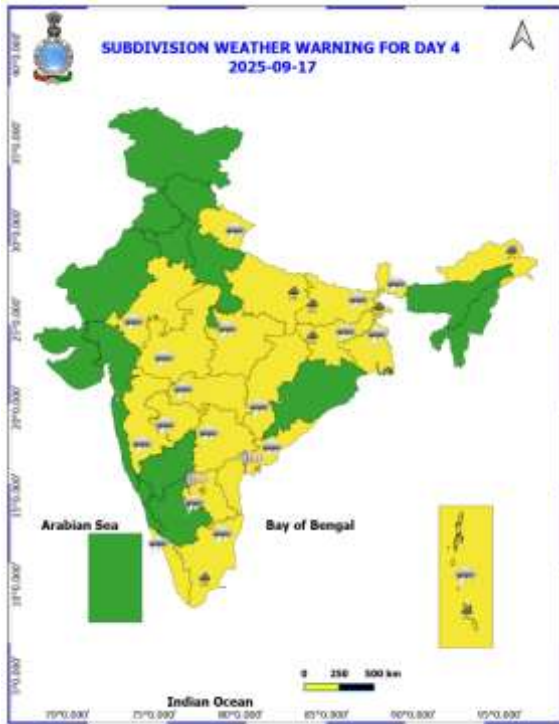
Rainfall recorded (in cm) during past 24 hours till 0830 hours IST of today, the 14th September ($\geq 7\text{cm}$):

- ❖ **Bihar:** Taibpur (dist Kishanganj) 30, Thakurganj (dist Kishanganj) 22, Pothia (dist Kishanganj) 15, Saurbazar (dist Saharsa) 15, Forbesganj (dist Araria) 14, Tedhagach (dist Kishanganj) 13, Madhipura (dist Madhepura) 11, Singheshwar (dist Madhepura) 11, Cheria B.pur 1 (dist Begusarai) 9, Dighalbank (dist Kishanganj) 9, Chhaurahi (dist Begusarai) 9, Supaul (dist Supaul) 8, Kahara (dist Saharsa) 7, Sheikhpura (dist Sheikhpura) 7, Khagadia (dist Khagaria) 7,
- ❖ **Sub-Himalayan West Bengal & Sikkim:** Falakata (dist Alipurduar) 23, Dharala Valley Tea Esta (dist Jalpaiguri) 19, Sankos Tea Estate (dist Alipurduar) 18, Chepan (dist Alipurduar) 18, Patkapara Tea Estate (dist Alipurduar) 18, Majherdabri Tea Garden (dist Alipurduar) 17, Ghish (dist Jalpaiguri) 16, Raidak Tea Estate (dist Alipurduar) 15, Washabari Tea Estate (dist Jalpaiguri) 14, Neora (dist Jalpaiguri) 14, Denguajhar Tea Garden (dist Jalpaiguri) 13, Kumargram Tea Estate (dist Alipurduar) 13, Oodlabari Tea Estate (dist Jalpaiguri) 13, Bhatkawa Tea Estate (dist Jalpaiguri) 13, Alipurduar (pto) (dist Alipurduar) 13, Newlands Tea Garden (dist Alipurduar) 12, Jalpaiguri (dist Jalpaiguri) 12, Sevoke (dist Darjeeling) 10, Aryaman Tea Estate (dist Alipurduar) 10, Chengmari/diana (dist Jalpaiguri) 10, Subhasini Tea Estate (dist Alipurduar) 10, Leesh River Tea Garden (dist Jalpaiguri) 10, Dhupguri (dist Jalpaiguri) 10, Damdim Tea Estate (dist Jalpaiguri) 9, Gopalpur Tea Estate (dist Alipurduar) 9, Anandpur Tea Estate (dist Jalpaiguri) 9, Murti (dist Jalpaiguri) 9, Good Hope Tea Estate (dist Jalpaiguri) 8, Chalouni Tea Estate (dist Jalpaiguri) 8, Kailashpur Tea Estate (dist Jalpaiguri) 8, Hasimara (dist Alipurduar) 8, Jaybirpara Tea Estate (dist Alipurduar) 8, Gyalsing (pto) (dist Gyalshing) 8, Ghughumari (dist Cooch Behar) 8, Bhutanghat (dist Alipurduar) 8, Domohani (dist Jalpaiguri) 8, Kumlai T.e. (dist Jalpaiguri) 8, Maynaguri College (dist Jalpaiguri) 8, Buxaduar (dist Alipurduar) 8, Ghatia T.e. (dist Jalpaiguri) 7, Mogulkata Tea Estate (dist Jalpaiguri) 7, Aibheel Tea Estate (dist Jalpaiguri) 7,
- ❖ **Himachal Pradesh:** Dharmsala (dist Kangra) 23, Palampur (dist Kangra) 13, Sundarnagar (dist Mandi) 8, Jogindarnagar (dist Mandi) 8, Karsog (dist Mandi) 7,
- ❖ **Marathawada:** Paithan (dist Chh. Sambhajinagar) 20, Shirur Anantpal (dist Latur) 11, Georai (dist Beed) 7,
- ❖ **Telangana:** Venkatapuram (dist Mulugu) 13, Manuguru (dist B. Kothagudem) 8, Peddapalle (dist Peddapalle) 7, Gudurwrgl (dist Mahabubabad) 7,
- ❖ **Assam & Meghalaya:** A P Ghat (dist Cachar) 13, Matijuri (dist Hailakandi) 13, Karimganj (dist Sribhumi) 12, Silchar (dist Cachar) 11, Lakhipur Arg (dist Cachar) 9, Mirza Circle Office Arg (dist Kamrup (rural)) 9, Lanka Arg (dist Nagaon) 9, Chouldhuwaghat Arg (dist Lakhimpur) 8, Lumding Arg (dist Hojai) 8, Lumding (dist Hojai) 8, Majbat (dist Udalguri) 7,
- ❖ **Konkan & Goa:** Sudhagad Pali (dist Raigad) 12, Karjat_agri (dist Raigad) 9, Santacruz - Imd Obsy (dist Mumbai Suburban) 9, Poladpur (dist Raigad) 8, Mangaon (dist Raigad) 8,
- ❖ **Madhya Maharashtra:** Nevasa (dist Ahilyanagar) 11, Karjat (dist Ahilyanagar) 8, Pathardi (dist Ahilyanagar) 7,
- ❖ **Nagaland, Manipur, Mizoram & Tripura:** Jalukie Aws (dist Peren) 12, Khowai (dist Khowai) 10, Sabroom (dist South Tripura) 9, Kolasib_aws (dist Kolasib) 9, Sabroom Aws (dist South Tripura) 8, Kanchanpur (dist North Tripura) 7, Ongpangkong Nsdma_aws (dist Mokokchung) 7,
- ❖ **Tamil Nadu:** Zone 05 Parrys (dist Chennai) 11;
- ❖ **Coastal Andhra Pradesh & Yanam:** Macherla (dist Palnadu) 9, Guntur (dist Guntur) 7, Tiruvuru (dist Ntr District) 7, Nuzvid (dist Eluru) 7, Velairpad (dist Eluru) 7,
- ❖ **Gangetic West Bengal:** Amtala (dist Murshidabad) 8,
- ❖ **East Madhya Pradesh:** Baihar (dist Balaghat) 8,
- ❖ **Gujarat Region:** Khergam (dist Navsari) 7,
- ❖ **Uttarakhand:** Haripur (dist Dehradun) 7,

Table-1								
7 Days Rainfall Forecast								
S.No.	Subdivision	14- Sep	15- Sep	16- Sep	17- Sep	18- Sep	19- Sep	20- Sep
		Day 1	Day 2	Day 3	Day 4	Day 5	Day 6	Day 7
1	ANDAMAN & NICOBAR ISLANDS	FWS	FWS	FWS	WS	WS	WS	FWS
2	ARUNACHAL PRADESH	FWS	WS	WS	FWS	FWS	SCT	SCT
3	ASSAM & MEHGHALAYA	WS	FWS	FWS	FWS	FWS	FWS	FWS
4	NAGALAND, MANIPUR, MIZORAM AND TRIPURA	WS	FWS	FWS	FWS	FWS	FWS	FWS
5	SUB HIMALAYAN WEST BENGAL & SIKKIM	WS	WS	WS	WS	WS	FWS	FWS
6	GANGETIC WEST BENGAL	FWS	WS	WS	WS	FWS	SCT	SCT
7	ODISHA	FWS	FWS	SCT	SCT	SCT	SCT	SCT
8	JHARKHAND	FWS	WS	WS	WS	FWS	SCT	SCT
9	BIHAR	FWS	FWS	FWS	FWS	FWS	SCT	SCT
10	EAST UTTAR PRADESH	ISOL	SCT	FWS	FWS	FWS	SCT	SCT
11	WEST UTTAR PRADESH	ISOL	ISOL	SCT	SCT	ISOL	ISOL	ISOL
12	UTTARAKHAND	FWS	WS	FWS	SCT	SCT	SCT	SCT
13	HARYANA, CHANDIGARH & DELHI	ISOL	ISOL	SCT	SCT	SCT	ISOL	DRY
14	PUNJAB	ISOL	ISOL	SCT	SCT	SCT	ISOL	DRY
15	HIMACHAL PRADESH	FWS	SCT	SCT	SCT	SCT	SCT	ISOL
16	JAMMU AND KASHMIR AND LADAKH	SCT	SCT	SCT	SCT	SCT	SCT	ISOL
17	WEST RAJASTHAN	DRY	DRY	DRY	DRY	ISOL	ISOL	ISOL
18	EAST RAJASTHAN	ISOL	ISOL	ISOL	ISOL	ISOL	ISOL	ISOL
19	WEST MADHYA PRADESH	SCT	SCT	FWS	FWS	FWS	FWS	FWS
20	EAST MADHYA PRADESH	SCT	FWS	FWS	FWS	FWS	FWS	FWS
21	GUJRAT REGION	ISOL	ISOL	ISOL	SCT	FWS	FWS	FWS
22	SAURASHTRA & KUTCH	ISOL	ISOL	ISOL	ISOL	SCT	SCT	SCT
23	KONKAN & GOA	WS	WS	FWS	FWS	SCT	SCT	SCT
24	MADHYA MAHARASHTRA	WS	WS	FWS	FWS	SCT	SCT	SCT
25	MARATHWADA	FWS	FWS	SCT	SCT	SCT	SCT	SCT
26	VIDARBHA	WS	WS	WS	FWS	FWS	SCT	SCT
27	CHHATTISGARH	FWS	FWS	FWS	SCT	SCT	SCT	SCT
28	COASTAL ANDHRA PRADESH	SCT	SCT	SCT	SCT	SCT	FWS	SCT
29	TELANGANA	FWS	FWS	FWS	SCT	SCT	SCT	SCT
30	RAYALASEEMA	ISOL	ISOL	ISOL	ISOL	SCT	SCT	ISOL
31	TAMILNADU & PUDUCHERRY	ISOL	ISOL	SCT	SCT	SCT	SCT	ISOL
32	COSTAL KARNATAKA	FWS	FWS	FWS	WS	WS	FWS	FWS
33	NORTH INTERIOR KARNATAKA	WS	WS	FWS	FWS	FWS	FWS	FWS
34	SOUTH INTERIOR KARNATAKA	SCT	SCT	FWS	FWS	FWS	FWS	FWS
35	KERALA AND MAHE	SCT	FWS	FWS	FWS	FWS	SCT	SCT
36	LAKSHADWEEP	SCT	FWS	SCT	SCT	SCT	SCT	SCT

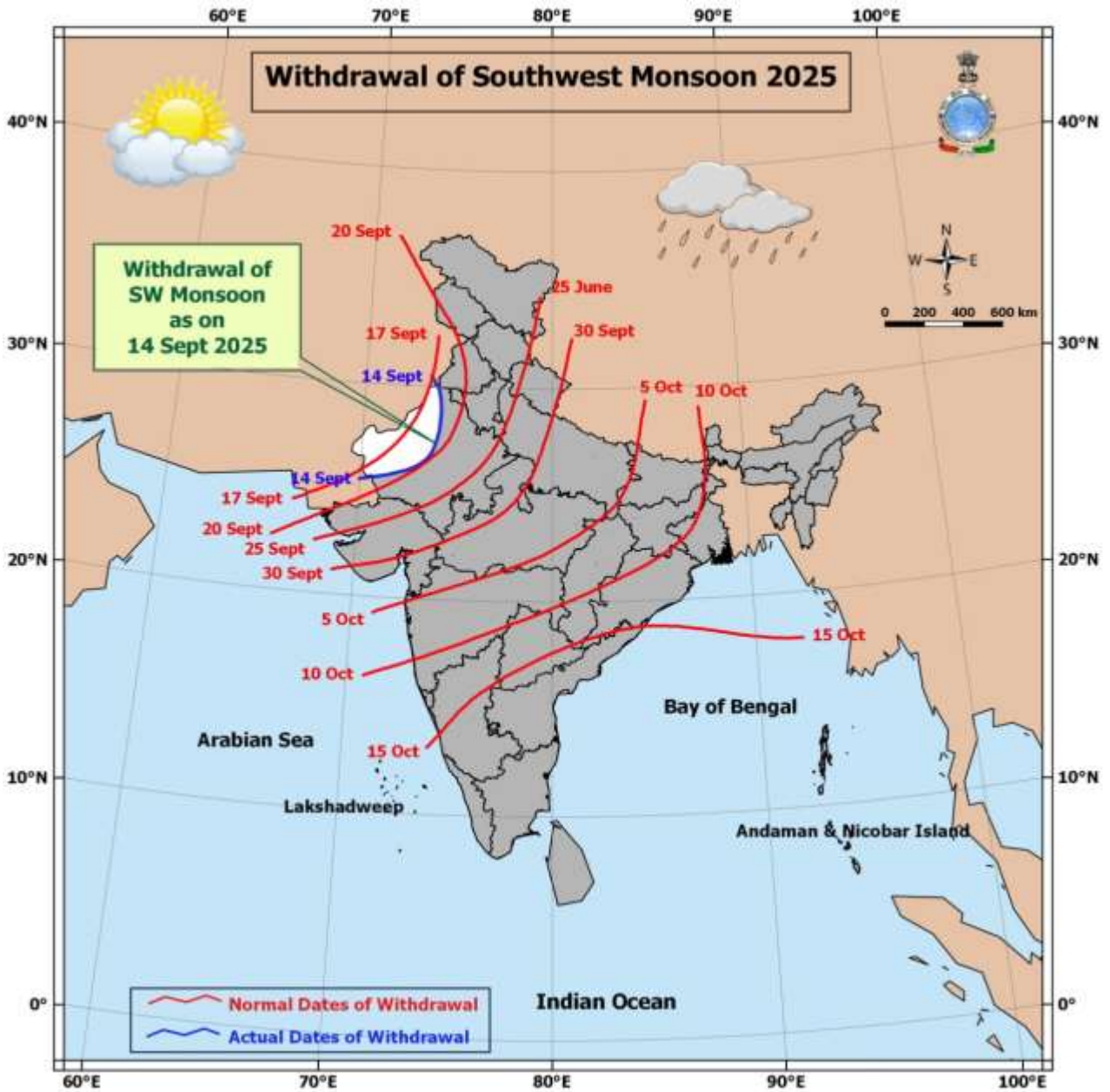
- As the lead period increases forecast accuracy decrease.





- Action may be taken based on ORANGE AND REDCOLOUR warnings.
- Vulnerable regions likely urban and hilly areas action may be initiated for heavy rainfall warning.
- As the lead period increases forecast accuracy decreases.

Detailed districtwise Multi Hazard weather warning for next five days available at <https://mausam.imd.gov.in/responsive/districtWiseWarningGIS.php>



Weather forecast over Delhi/NCR during 14th to 17th September 2025**Past Weather:**

There has been rise in the minimum temperature up to 1°C and rise in maximum temperature up to 1°C over Delhi/NCR during the past 24 hours. The maximum and minimum temperatures over Delhi were around 34 to 36°C and 24 to 26°C respectively. The minimum and maximum temperatures were above normal up to 1 - 2°C. Partly cloudy sky conditions with predominant surface wind from the northwest/west direction with wind speeds up to 14 kmph prevailed during the past 24 hours. Partly cloudy sky conditions with a wind speed of less than 14 kmph from the southwest direction prevailed over the region in the forenoon today.

Weather Forecast:

14.09.2025: Partly cloudy sky. Possibility of a spell of very light rain likely at isolated places during afternoon/evening. The maximum and minimum temperatures over Delhi are likely to be in the range of 33 to 35°C. The maximum temperature will be above normal up to 1 to 2°C. The predominant surface wind will likely to be from the northwest direction with a wind speed of up to 10-15 kmph during afternoon hours. The wind speed will decrease becoming less than 10 kmph from the northwest direction during the evening and night.

15.09.2025: Mainly clear sky becoming partly cloudy sky towards afternoon. The maximum and minimum temperatures over Delhi are likely to be in the range of 34 to 36°C and 24 to 26°C respectively. The minimum temperature will be near normal and the maximum temperature will be above normal up to 1 - 2°C. The predominant surface wind will likely to be from the northwest direction with a wind speed of up to 20-22 kmph during morning hours. The wind speed will gradually increase becoming less than 25 kmph from the northwest direction in the afternoon. The wind speed will decrease becoming less than 12 kmph from the southwest direction during the evening and night.

16.09.2025: Partly cloudy sky. The maximum and minimum temperatures over Delhi are likely to be in the range of 33 to 35°C and 23 to 25°C respectively. The minimum temperature will be below normal up to 1 - 2°C and the maximum temperature will be near normal. The predominant surface wind will likely to be from the northwest direction with a wind speed of up to 10-15 kmph during morning hours. The wind speed will gradually increase becoming less than 18 kmph from the northwest direction in the afternoon. The wind speed will increase becoming less than 25 kmph from the southeast direction during the evening and night.

17.09.2025: Partly cloudy sky. The maximum and minimum temperatures over Delhi are likely to be in the range of 32 to 34°C and 23 to 25°C respectively. The minimum temperature will be below normal up to 1 - 2°C and the maximum temperature will be below normal up to 1 - 2°C. The predominant surface wind will likely to be from the southeast direction with a wind speed of up to 08-12 kmph during morning hours. The wind speed will gradually increase becoming less than 25 kmph from the southwest direction in the afternoon. The wind speed will decrease becoming less than 20 kmph from the southeast direction during the evening and night.

Flash Flood:

24 hours Outlook for the Flash Flood Risk (FFR) till 1130 IST of 15-09-2025 :

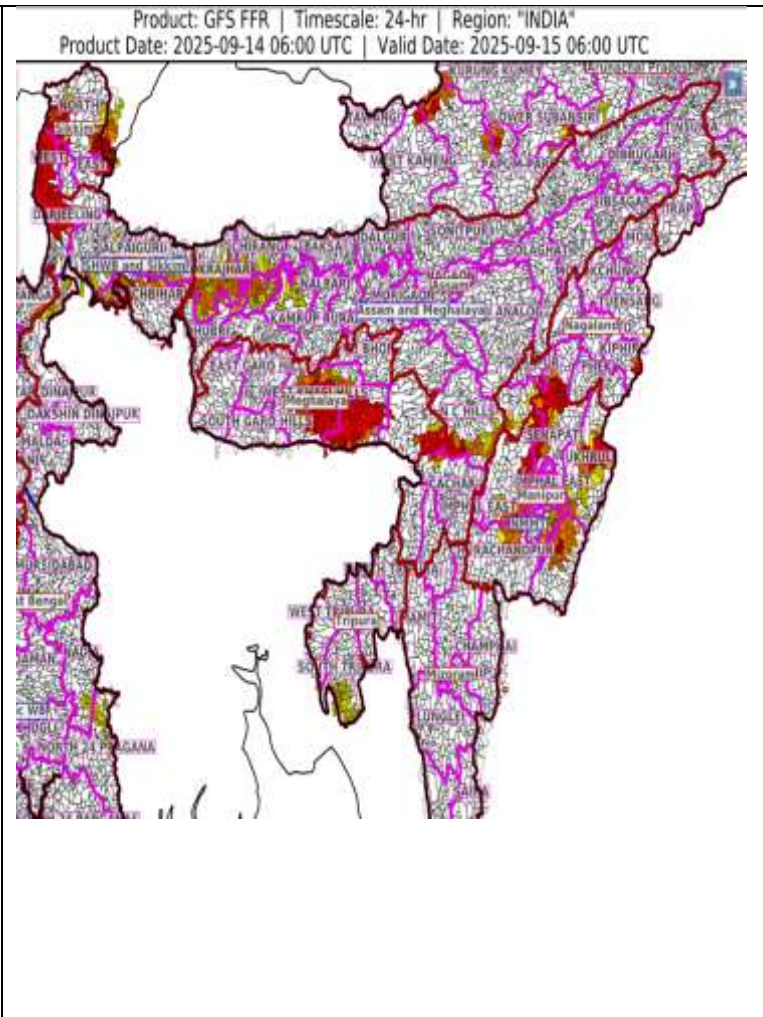
Low to Moderate flash flood risk likely over few watersheds & neighbourhoods of following Met Sub-divisions during next 24 hours.

Assam & Meghalaya - Barpeta, Bongaigaon, Cachar, Chirang, Goalpara, Kokrajhar, N.C Hills, East Khasi Hills, West Khasi Hills and Jaintia Hills districts.

Nagaland Mizoram Manipur Tripura (NMMT) –
 Manipur – **Chandel district, Churachandpur district, Imphal East district, Senapati district, Tamenglong district and Ukhrul district**
 Mizoram – **Serchhip district**
 Nagaland – **Dimapur district, Kiphire district, Kohima district and Peren district**
 Tripura – **South Tripura district.**

Sub-Himalayan West Bengal & Sikkim - East Sikkim, North Sikkim, South Sikkim, West Sikkim, Darjeeling, Jalpaiguri, Kochbihar and Uttar_Dinajpur districts.

Surface runoff/ Inundation may occur at some fully saturated soils & low-lying areas over Area of Concern (AoC) as shown in map due to expected rainfall occurrence in next 24 hours.

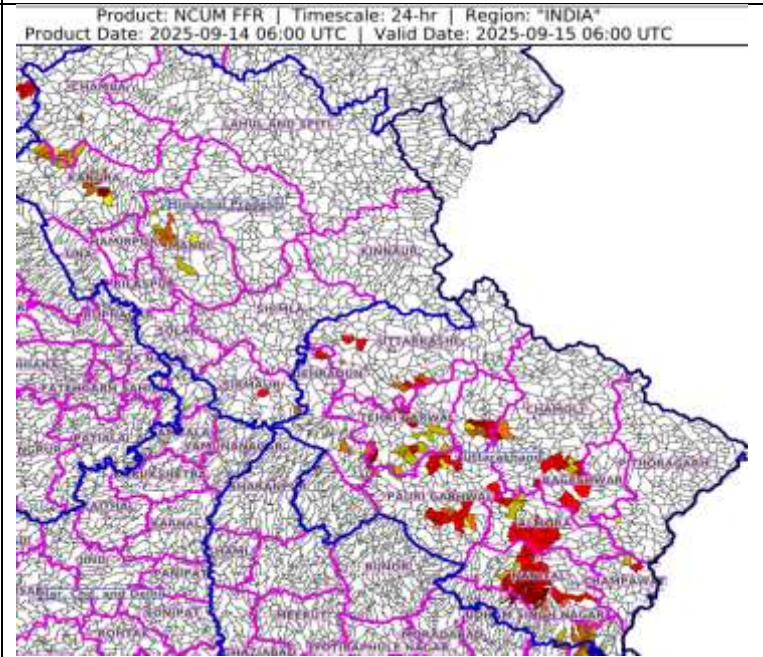


24 hours Outlook for the Flash Flood Risk (FFR) till 1130 IST of 15-09-2025 :

Low to Moderate flash flood risk likely over few watersheds & neighbourhoods of following Met Sub-divisions during next 24 hours.

Himachal Pradesh - Chamba, Kangra, Mandi and Sirmaur districts.
 Uttarakhand - Almora, Bageshwar, Chamoli, Champawat, Dehradun, Nanital, Pauri Garhwal, Pithoragarh, Rudraprayag, Tehri Garwal, Udham Singh Nagar and Uttarkashi districts.

Surface runoff/ Inundation may occur at some fully saturated soils & low-lying areas over Area of Concern (AoC) as shown in map due to expected rainfall occurrence in next 24 hours.



Impact & Action Suggested due to

- ❖ **Heavy to very heavy rainfall (12-20 cm)** at isolated places over Arunachal Pradesh on 15th & 16th; Nagaland, Manipur, Mizoram & Tripura and Assam & Meghalaya on 14th, Sub-Himalayan West Bengal & Sikkim on 14th & 15th and Bihar during 14th-16th, Konkan & Goa Madhya, Maharashtra & Marathwada 14th & 15th September.

Impact Expected

- Localized Flooding of roads, water logging in low lying areas and closure of underpasses mainly in urban areas of the above region.
- Occasional reduction in visibility due to heavy rainfall.
- Disruption of traffic in major cities due to water logging in roads leading to increased travel time.
- Minor damage to kutch roads.
- Possibilities of damage to vulnerable structure.
- Localized Landslides/Mudslides/landslips/mudslips/landsinks/mudsinks.
- Damage to horticulture and standing crops in some areas due to inundation.
- It may lead to riverine flooding in some river catchments (for riverine flooding please visit Web page of CWC)

Action Suggested

- Check for traffic congestion on your route before leaving for your destination.
- Follow any traffic advisories that are issued in this regard.
- Avoid going to areas that face the water logging problems often.
- Avoid staying in vulnerable structure.

Agromet advisories for likely impact of Heavy / Heavy to Very Heavy Rainfall

- In **Sub-Himalayan West Bengal**, make provision to drain out excess water from *aman* paddy and vegetable fields (chilli, bitter gourd, pointed gourd, okra, brinjal etc.) in **Terai Zone** and black gram, finger millet, ginger, dalley khorsani, vegetables and fruit orchards in **Hill Zone**.
- In **Bihar**, ensure proper drainage of excess rainwater from standing crops such as maize, finger millet and vegetables in **North East Alluvial Zone**.
- In **Arunachal Pradesh**, immediately harvest matured crops of *Jhum* rice, soybean, finger millet, foxtail millet, vegetables, matured bunches of banana and matured fruits of apple and kiwi and shift the harvested produce to properly covered shelter. Maintain proper drainage in standing crops such as rice, soybean, finger millet, vegetables and fruit orchards to avoid water stagnation. Avoid fresh sowing of French bean during heavy rainfall and ensure proper drainage in already sown crop.
- In **Assam**, ensure proper drainage in fields of rice, sugarcane, black gram and sesame in **Hill Zone**. In **Lower Brahmaputra Valley Zone**, ensure proper drainage system in *Sali* rice fields and nursery bed of vegetables. Cover the nursery bed with thin polythene to avoid the damages due to heavy rainfall. In **Barak Valley Zone**, postpone the sowing of green gram and black gram and provide adequate drainage facilities in fields of rice, vegetables and already sown green gram and black gram. In **Upper Brahmaputra Valley Zone**, harvest the matured vegetables and fruits and transfer it to a safer location and make arrangements to drain out excess water from the standing crop fields.
- In **Meghalaya**, maintain proper drainage in ginger and vegetable fields and fruit orchards. Provide support to tall and fragile crops like banana, papaya, pumpkin, etc. to prevent lodging.
- In **Nagaland**, undertake harvesting of matured *Jhum* rice, pods of sesame and Naga King chilli and store the harvested produce in safe places. Maintain 3-5 cm stagnate water in rice fields.
- In **Uttarakhand**, ensure proper drainage in the fields of green gram, black gram, soybean, barnyard millet and finger millet in **Sub Humid Sub Tropic Zone**. In **Bhabar and Tarai Zone**, maintain proper drainage in fields of rice, pigeon pea, black gram, green gram, finger millet, maize and soybean. Avoid sowing of potato and radish under heavy rainfall conditions and ensure proper drainage in already sown crop. In **Hill Zone**, undertake harvesting of matured crops of barnyard millet, ginger and rainfed rice and keep the harvested produce in safe place. Ensure proper drainage in pigeon pea and vegetable crops.
- In **Himachal Pradesh**, drain out excess water from the fields of rice, maize and vegetables in **Sub-Montane & Low Hills Sub-Tropical Zone** and maize, vegetable fields and fruit orchards in **High Hills Sub Temperate Wet Zone**.

- In **Maharashtra**, immediately harvest matured crops of green gram and black gram in **Madhya Maharashtra** and matured fruits of sapota and custard apple in **Marathwada** and keep the harvested produce at safer places. In **Vidarbha**, store the harvested produce of green gram and black gram at safe places, if storage is not possible cover the harvested produce with plastic or tarpaulin sheets. Make arrangements to drain out excess water from fields of vegetables and fruit orchards in **Konkan**; rice, sugarcane, pigeon pea, soybean, maize, vegetables and fruit orchards in **Madhya Maharashtra**; sugarcane, sorghum, soybean, turmeric, vegetables and fruit orchards in **Marathwada**; pigeon pea, cotton, soybean, maize, vegetables and fruit orchards in **Vidarbha**.
- In **Telangana**, ensure adequate drainage facilities to drain out excess rain water in fields of rice, maize, cotton, soybean, pigeon pea, turmeric and vegetables.

Livestock / Fishery

- Keep the animals inside the shed during heavy rainfall and provide them balanced feed.
- Store feed and fodder in a safe place to prevent spoilage.
- Construct an outlet with proper netting around the ponds to drain out excess water, thereby preventing fish from escaping in case of overflow.

Agromet advisories for likely impact of Thunderstorm / Gusty Winds / Squally Winds

(Based on the IBF and advisories issued by different AMFUs)

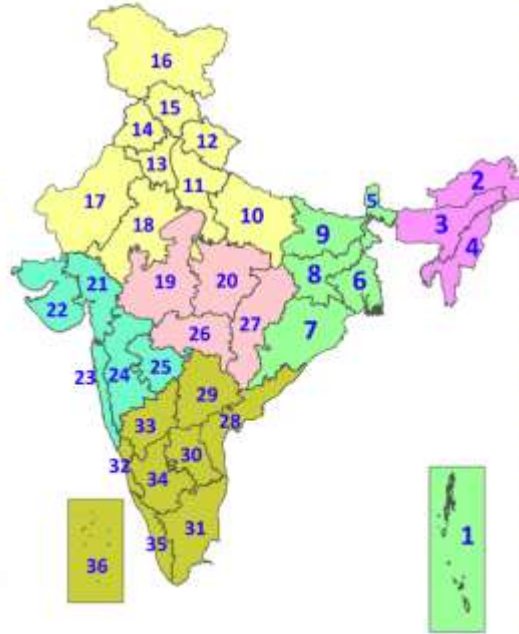
- Provide mechanical support to horticultural crops and staking or support to vegetables and young fruit plants / fruit-bearing plants to avoid lodging due to strong winds.

Legends & abbreviations:

- ❖ **Heavy Rain:**64.5-115.5mm; **Very Heavy Rain:**115.6-204.4mm; **Extremely Heavy Rain:** >204.4mm.
- ❖ **Obsy:** Observatory; Automatic Weather Station; **ARG:** Automatic Rain Gauge; **dist:** District; **NH:** National Highway; **KVK:** Krishi Vigyan Kendra; **DVC:** Damodar Valley Corporation; **PTO:** Part Time Office, **Aero:** Aerodrome, **IAF:** Indian Air Force.
- ❖ **Region wise classification of meteorological Sub-Divisions:**
 - **Northwest India:** Western Himalayan Region (Jammu-Kashmir-Ladakh-Gilgit-Baltistan-Muzaffarabad, Himachal Pradesh and Uttarakhand); Punjab, Haryana-Chandigarh-Delhi; West Uttar Pradesh, East Uttar Pradesh, West Rajasthan and East Rajasthan.
 - **Central India:** West Madhya Pradesh, East Madhya Pradesh, Vidarbha and Chhattisgarh.
 - **East India:** Bihar, Jharkhand, Sub-Himalayan West Bengal & Sikkim; Gangetic West Bengal, Odisha and Andaman & Nicobar Islands.
 - **Northeast India:** Arunachal Pradesh, Assam & Meghalaya and Nagaland, Manipur, Mizoram & Tripura.
 - **West India:** Gujarat Region, Saurashtra & Kutch, Konkan & Goa, Madhya Maharashtra and Marathawada.
 - **South India:** Coastal Andhra Pradesh & Yanam, Telangana, Rayalaseema, Coastal Karnataka, North Interior Karnataka, South Interior Karnataka, Kerala & Mahe, Tamil Nadu, Puducherry & Karaikal and Lakshadweep.

LEGENDS

1. अंडमान और निकोबार द्वीपसमूह
2. अरुणाचल प्रदेश
3. असम और मेघालय
4. नागालैंड, मणिपुर, मिजोरम और त्रिपुरा
5. उप-हिमालयी पश्चिम बंगाल और सिक्किम
6. गंगीय पश्चिम बंगाल
7. ओडिशा
8. झारखंड
9. बिहार
10. पूर्वी उत्तर प्रदेश
11. पश्चिम उत्तर प्रदेश
12. उत्तराखंड
13. हरियाणा, चंडीगढ़ और दिल्ली
14. पंजाब
15. हिमाचल प्रदेश
16. जम्मू और कश्मीर और लद्दाख
17. पश्चिम राजस्थान
18. पूर्वी राजस्थान
19. पश्चिम मध्य प्रदेश
20. पूर्वी मध्य प्रदेश
21. गुजरात
22. सौराष्ट्र
23. कोंकण और गोवा
24. मध्य महाराष्ट्र
25. मराठवाड़ा
26. विदर्भ
27. छत्तीसगढ़
28. तटीय आंध्र प्रदेश और यनम
29. तेलंगाना
30. रायलसीमा
31. तमिलनाडु, पुडुचेरी और कराईकल
32. तटीय कर्नाटक
33. आंतरिक उत्तरी कर्नाटक
34. आंतरिक दक्षिणी कर्नाटक
35. केरल और माहे
36. लक्षद्वीप



1. Andaman & Nicobar Islands
2. Arunachal Pradesh
3. Assam & Meghalaya
4. Nagaland, Manipur, Mizoram & Tripura
5. Sub-Himalayan West Bengal & Sikkim
6. Gangetic West Bengal
7. Odisha
8. Jharkhand
9. Bihar
10. East Uttar Pradesh
11. West Uttar Pradesh
12. Uttarakhand
13. Haryana, Chandigarh & Delhi
14. Punjab
15. Himachal Pradesh
16. Jammu & Kashmir and Ladakh
17. West Rajasthan
18. East Rajasthan
19. West Madhya Pradesh
20. East Madhya Pradesh
21. Gujarat
22. Saurashtra
23. Konkan & Goa
24. Madhya Maharashtra
25. Marathwada
26. Vidarbha
27. Chhattisgarh
28. Coastal Andhra Pradesh & Yanam
29. Telangana
30. Rayalaseema
31. Tamilnadu, Puducherry & Karaikal
32. Coastal Karnataka
33. North Interior Karnataka
34. South Interior Karnataka
35. Kerala & Mahe
36. Lakshadweep

SPATIAL DISTRIBUTION (% of Stations reporting)

% Stations	Category	% Stations	Category
76-100	Widespread (WS/Most Places)	26-50	Scattered (SCT/A Few Places)
51-75	Fairly Widespread (FWS/Many Places)	1-25	Isolated (ISOL)

- | | | |
|----------------------|----------------------|--------------|
| Fog | Heavy Snow | Cold Wave |
| Heavy Rain | Dust Storm | Cold Day |
| Very Heavy Rain | Heat Wave | Ground Frost |
| Extremely Heavy Rain | Warm Night | |
| Thunder & Lightning | Hot Day | |
| Hailstorm | Hot & Humid | |
| Dust Raising Winds | Strong Surface Winds | |

COLOUR CODED WARNING

No Warning (No Action)
Watch (Be Aware)
Alert (Be Prepared To Take Action)
Warning (Take Action)

Probabilistic Forecast

Terms	Probability of Occurrence (%)
Unlikely	< 25
Likely	25 - 50
Very Likely	50 - 75
Most Likely	> 75

* Red colour warning does not mean "Red Alert", Red colour warning means "Take Action".
Forecast and Warning for any day is valid from 0830 hours IST of day till 0830 hours IST of next day.
For more details, kindly visit <https://mausam.imd.gov.in> or contact: 011-2434-4599
(Service to the Nation since 1875)

DEFINITION/CRITERIA

Rain/ Snow *	<p>Heavy: 64.5 to 115.5 mm/cm *</p> <p>Very Heavy: 115.6 to 204.4 mm/cm*</p> <p>Extremely Heavy: > 204.4 mm/cm *</p>
Heat Wave	<p>When maximum temperature of a station reaches $\geq 40^{\circ}\text{C}$ for plains and $\geq 30^{\circ}\text{C}$ for hilly regions</p> <p>(a) Based on Departure from normal</p> <p>Heat Wave: Maximum Temperature Departure from normal 4.5°C to 6.4°C.</p> <p>Severe Heat Wave: Maximum Temperature Departure from normal $\geq 6.5^{\circ}\text{C}$</p> <p>(b). Based on Actual maximum temperature</p> <p>Heat Wave: When actual maximum temperature $\geq 45^{\circ}\text{C}$.</p> <p>Severe Heat Wave: When actual maximum temperature $\geq 47^{\circ}\text{C}$</p> <p>(c). Criteria for heat wave for coastal stations</p> <p>When maximum temperature departure is $>4.5^{\circ}\text{C}$ from normal. Heat Wave may be described provided maximum temperature $\geq 37^{\circ}\text{C}$.</p>
Warm Night	<p>When maximum temperature remains 40°C</p> <p>Warm Night: When minimum temperature departure 4.5°C to 6.4°C.</p> <p>Severe Warm Night: When minimum temperature departure $>6.4^{\circ}\text{C}$.</p>
Cold Wave	<p>When minimum temperature of a station $\leq 10^{\circ}\text{C}$ for plains and $\leq 0^{\circ}\text{C}$ for hilly regions.</p> <p>(a). Based on departure</p> <p>Cold Wave: Minimum Temperature Departure from normal -4.5°C to -6.4°C.</p> <p>Severe Cold Wave: Minimum Temperature Departure from normal $\leq -6.5^{\circ}\text{C}$</p> <p>(b) Based on actual Minimum Temperature (for Plains only)</p> <p>Cold Wave : When Minimum Temperature is $\leq 4.0^{\circ}\text{C}$</p> <p>Severe Cold Wave: When Minimum Temperature is $\leq 2.0^{\circ}\text{C}$</p> <p>(c) For Coastal Stations</p> <p>When Minimum Temperature departure is $\leq -4.5^{\circ}\text{C}$ & actual Minimum Temperature is $\leq 15^{\circ}\text{C}$</p>
Cold Day	<p>When minimum temperature of a station $\leq 10^{\circ}\text{C}$ for plains and $\leq 0^{\circ}\text{C}$ for hilly regions</p> <p>Based on departure</p> <p>Cold Day: Maximum Temperature Departure from normal -4.5°C to -6.4°C.</p> <p>Severe Cold Day: Maximum Temperature Departure from normal $\leq -6.5^{\circ}\text{C}$</p>
Fog	<p>Phenomenon of small droplets suspended in air and the horizontal visibility $< 1\text{km}$</p> <p>Moderate Fog: When the visibility between 500-200 metres</p> <p>Dense Fog: when the visibility between 50- 200 metres</p> <p>Very Dense Fog: when the visibility < 50 metres</p>
Thunderstorm	<p>Sudden electrical discharges manifested by a flash of light (Lightning) and a sharp rumbling sound (thunder)</p>
Dust/Sand Storm	<p>An ensemble of particles of dust or sand energetically lifted to great heights by a strong and turbulent wind.</p>
Frost	<p>Ice deposits on ground</p> <p>Air temperature $\leq 4^{\circ}\text{C}$ (over Plains)</p>
Squall	<p>A strong wind that rises suddenly, lasts for atleast 1 minute.</p> <p>Moderate: Wind speed 52-61 kmph</p> <p>Severe: Wind speed 62-67 kmph</p> <p>Very Severe: Wind speed >67 kmph</p>
Sea State	<p>Effect of various waves in the sea over specific area</p> <p>Rough to very rough: Wind speed 41-62 kmph (22-33 knots) & Wave height 2.5-6 metre</p> <p>High to very high: Wind speed 63-117 kmph (34-63 knots) & Wave height 6-14 metre</p> <p>Phenomenal: Wind speed >117 kmph (>63 knots) & Wave height >14 metre</p>
Cyclone	<p>Cyclonic Storm: Wind speed 62-67 kmph (34-47 knots)</p> <p>Severe Cyclonic Storm: Wind speed 88-117 kmph (48-63 knots)</p> <p>Very Severe Cyclonic Storm: Wind speed 118-165 kmph (64 - 89 knots)</p> <p>Extremely Severe Cyclonic Storm: Wind speed 166-220 kmph (90 -119 knots)</p> <p>Super Cyclone Storm: Wind speed >220 kmph (>119 knots)</p>

* Red colour warning does not mean "Red Alert", Red colour warning means "Take Action".
Forecast and Warning for any day is valid from 0830 hours IST of day till 0830 hours IST of next day.
For more details, kindly visit <https://mausam.imd.gov.in> or contact: 011-2434-4599
(Service to the Nation since 1875)

Hot and Humid: When maximum temperatures remain 3°C above normal along with the above normal relative humidity.